

Wavian

Quality Fuel Cans & Accessories



Guidance On The Safe Use Of Wavian Fuel Cans & Spouts

FOR MORE INFO VISIT WWW.WAVIAN.NET
+44 1508 493 647 sales@wavian.net

Index

Bayonet Fuel Cans

Opening a Wavian Bayonet Fuel Can..... Page 3

Closing a Wavian Bayonet Fuel Can.....Page 4

Screw Top Fuel Cans

Opening a Wavian fuel can with a Screw Top.....Page 5

Closing a Wavian fuel can with a Screw Top Page 6

Smart Spout

Connecting a Smart Spout to a Wavian Bayonet Fuel Can Page 7

Removing a Smart Spout' from a Wavian Bayonet Fuel Can..... Page 8

Connecting a Smart Spout to a Screw To Fuel Can..... Page 9

Removing a Smart Spout from a Screw Top Fuel Can..... Page 10

Bayonet Spout

Connecting a Bayonet Spout to a Wavian Bayonet Fuel Can..... Page 11

Removing a Bayonet Spout from a Wavian Bayonet Fuel Can..... Page 12

Flexi Spout

Connecting a Flexi Spout to a Wavian Bayonet Fuel Can..... Page 13

Removing a Flexi Spout from a Wavian Bayonet Fuel Can..... Page 14

Connecting a Flexi Spout to a Wavian Fuel Can with Screw Cap..... Page 15

Removing a Flexi Spout from a Wavian Fuel Can with Screw Cap..... Page 16

Warnings & Recommendations

Warnings and recommendations on Fuel Cans..... Page 17

Warnings and recommendations on Smart Spout..... Page 18

Warnings and recommendations on Flexi and Universal Fuel Spouts..... Page 19

Wavian
Quality Fuel Cans & Accessories

IMPORTANT SAFETY INFORMATION

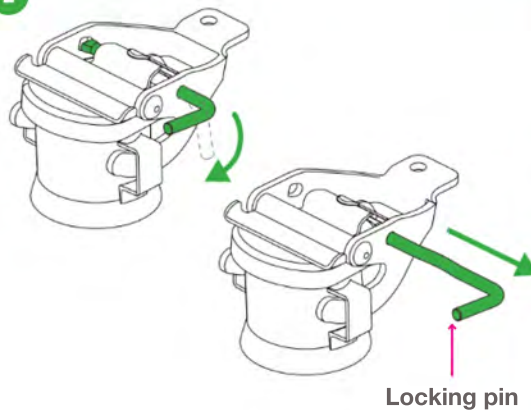
Opening a Wavian Bayonet Fuel Can

1



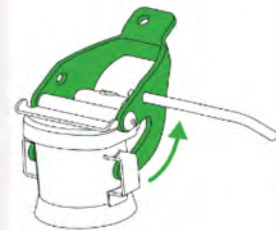
Place the fuel can on a flat, stable surface.

2



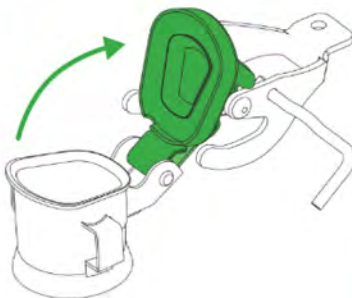
Turn the locking pin and pull it out of the lever as far as it will go.

3



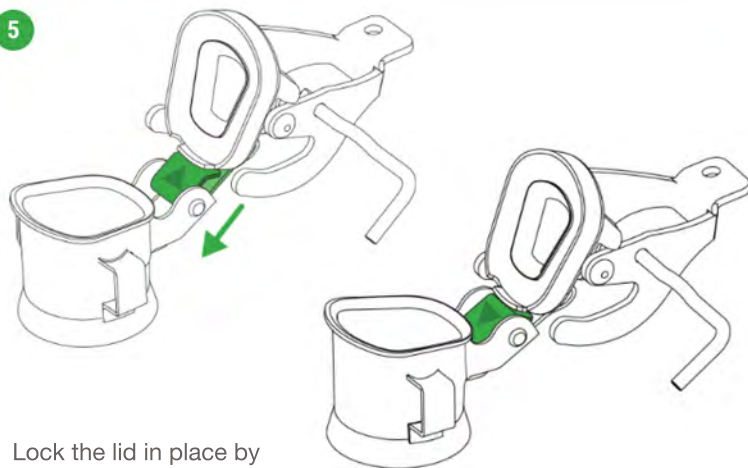
Lift the lever until the arms are fully released from the holder.

4



By pulling the lever, lift the lid up to open the neck opening.

5



Lock the lid in place by lowering the lid hinge down.

Wavian
Quality Fuel Cans & Accessories

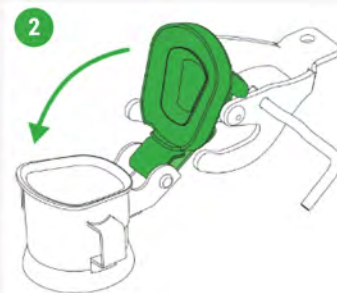
IMPORTANT SAFETY INFORMATION

Closing a Wavian Bayonet Fuel Can



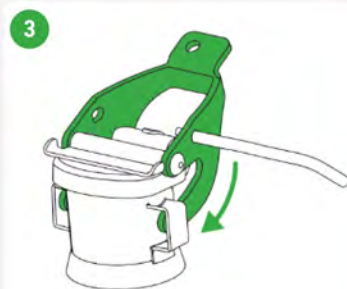
Important!

Before closing the fuel can, pull the lid with the hinge up by the lever.

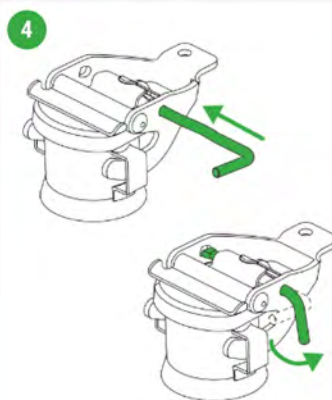


Push the lever forward until the lid completely covers the neck opening.

If the lever does not move forward - see step No.1. The lever with the lid should move easily and closing with too much force will damage the fuel can.



Close the lever by pressing the lever down as far as it will go.



Insert the locking pin through the lever and rotate in 90degrees.



Caution!

Whenever tilted, make sure the the fuel can is airtight.

Wavian
Quality Fuel Cans & Accessories

IMPORTANT SAFETY INFORMATION

Opening a Screw Top Fuel Can

1



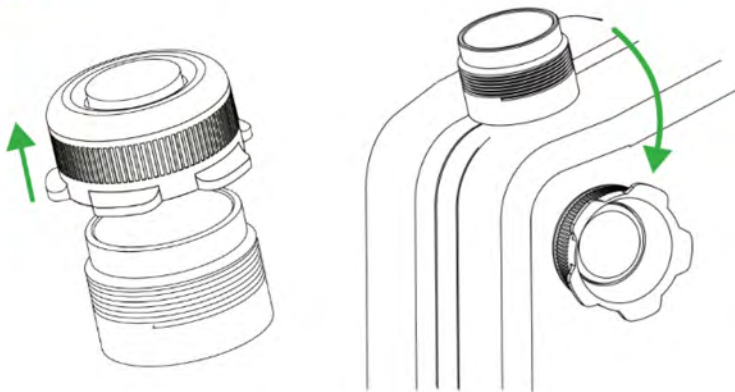
Place the fuel can on a flat, stable surface.

2



Open the fuel can by screwing the cap counterclockwise.

3



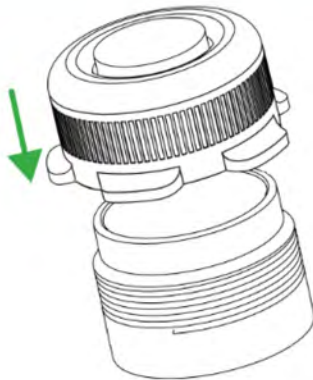
For your convenience, stick the removed cap to the fuel can with the help of the incorporated magnet.

Wavian
Quality Fuel Cans & Accessories

IMPORTANT SAFETY INFORMATION

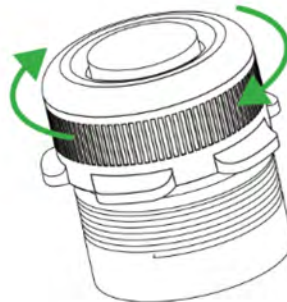
Closing a Screw Top Fuel Can

1



Place the cap back on the neck of the fuel can.

2



Close the fuel can shut by screwing the cap clockwise.

3



Screw the cap until you feel resistance. Then turn the cap an additional 1/4 of a turn. Do not tighten the cap too much, as it may be difficult to unscrew.

4



Caution!
Whenever tilted, make sure that the fuel can is airtight.

IMPORTANT SAFETY INFORMATION

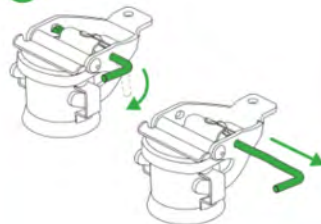
Connecting a Smart Spout to a Wavian Fuel Can

1



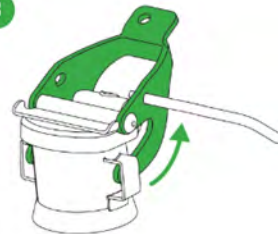
Place the fuel can on a flat, stable surface.

2



Turn the locking pin and pull it out of the level as far as it will go.

3



Lift the lever until the arms are fully released from the holder.

4



By pulling the lever, lift the lid up to open the neck opening.

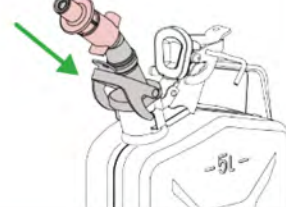
5



Lock the lid in place by lowering the hinge down.

6

Place the fuel spout so it completely covers the neck opening of the fuel can.



7



Move the arms of the lever into the cavities of the holder and push the lever of the spout down as far as it will go.

8



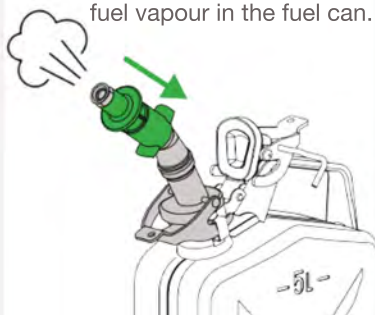
Before filling the fuel press the tip of the spout to even out the fuel pressure in the fuel can.

Wavian
Quality Fuel Cans & Accessories

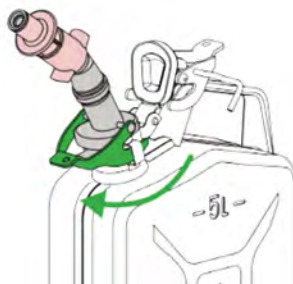
IMPORTANT SAFETY INFORMATION

Removing a Smart Spout from a Wavian Fuel Can

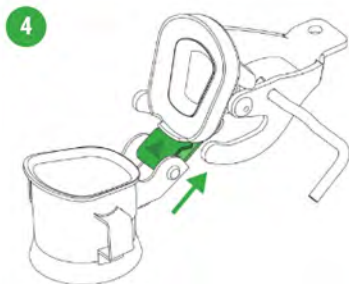
- 1** Press the tip of the spout to reduce the pressure of fuel vapour in the fuel can.



- 2** Pull back the level of the fuel spout to remove the product from the fuel can.



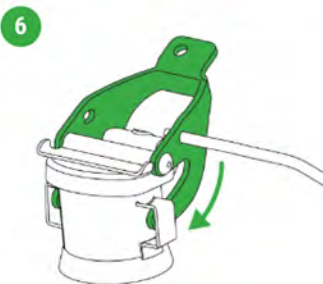
- 3**
-
- Remove the fuel spout.
- A line drawing of a fuel can with a spout. A green arrow points to the spout, which is being removed from the can.



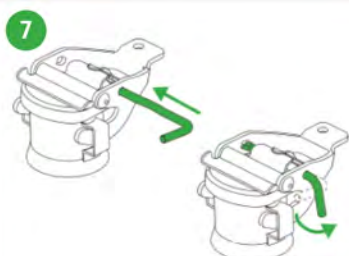
Important!
Before closing the fuel can lid, pull the lid with the hinge up by the lever!



Push the lever forward until the lid completely covers the neck opening.
If the lever does not move forward (see step 3). The lever with the lid should move easily. Closing with too much force will damage the can.



Close the lever by pressing the lever down as far as it will go.



Insert the locking pin through the lever and rotate it 90 degrees.



Caution!
Whenever tilted, make sure the fuel can is airtight.



If the fuel can is equipped with a fuel spout holder, attach the spout for easier transportation.

Please note: Because of the Smart Spout's unique design we recommend its use with our 5 & 10 Litre Wavian Fuel Cans.

Wavian
Quality Fuel Cans & Accessories

IMPORTANT SAFETY INFORMATION

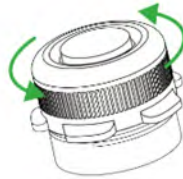
Connecting a Smart Spout to a Wavian screw top fuel can

1



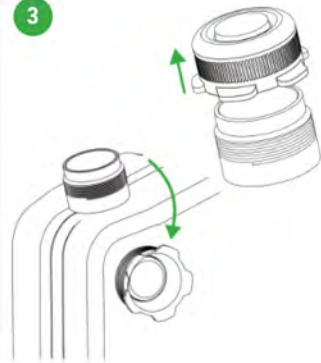
Place the fuel can on a flat, stable surface,

2



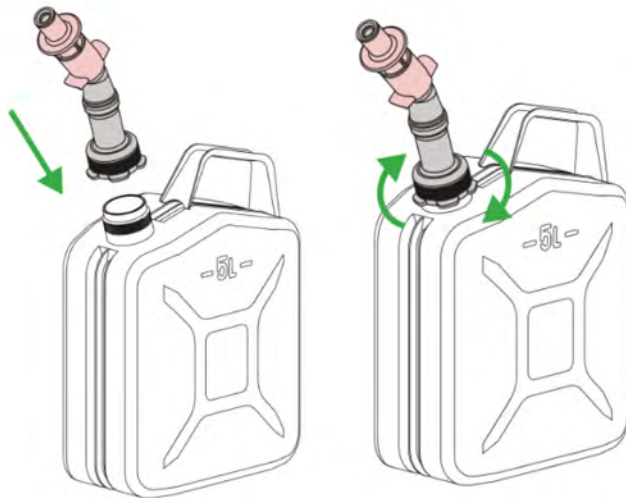
Open the can by screwing the cap counterclockwise.

3



Place the removed cap on the fuel can with the help of the incorporated magnet.

4



Screw the spout on by turning it clockwise until you feel resistance of the seal. Then turn the spout an additional $\frac{1}{4}$ of a turn.

5



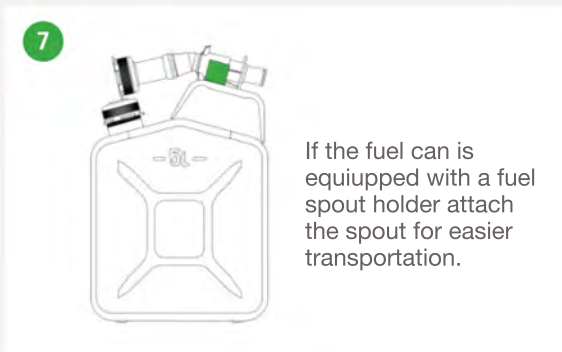
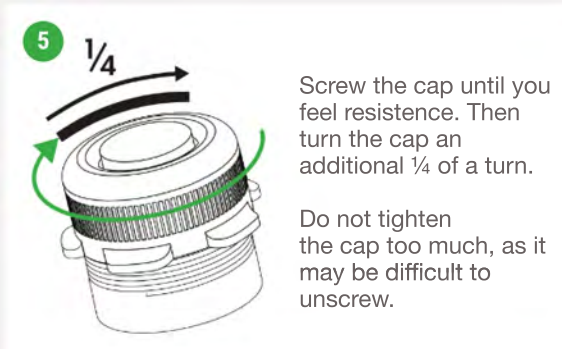
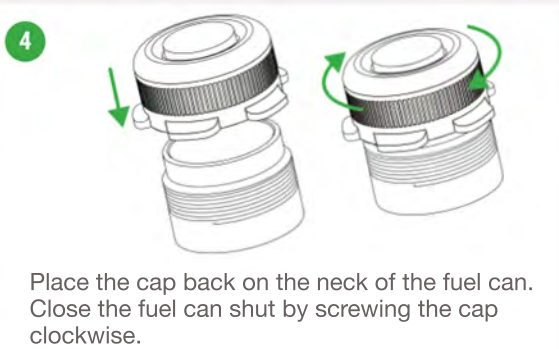
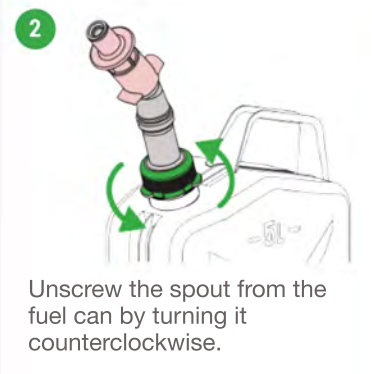
Before filling the fuel, press the tip of the spout to even out the fuel vapour pressure in the fuel can.

Please note: Because of the Smart Spout's unique design we recommend its use with our 5 & 10 Litre Wavian Fuel Cans.

Wavian
Quality Fuel Cans & Accessories

IMPORTANT SAFETY INFORMATION

Removing a Smart Spout from a Wavian screw top fuel can



Please note: Because of the Smart Spout's unique design we recommend its use with our 5 & 10 Litre Wavian Fuel Cans.

Wavian
Quality Fuel Cans & Accessories

IMPORTANT SAFETY INFORMATION

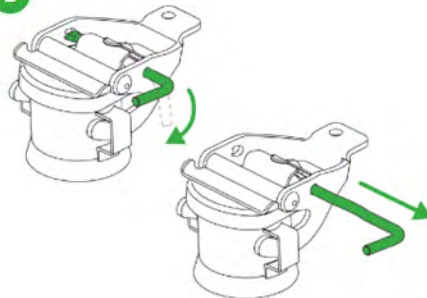
Connecting a spout to a Wavian fuel can with bayonet fitting.

1



Place the fuel can on a flat, stable surface.

2



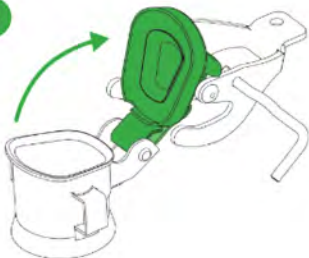
Turn the locking pin and pull it out of the lever as far as it will go.

3



Lift the lever until the arms are fully released from the holder.

4



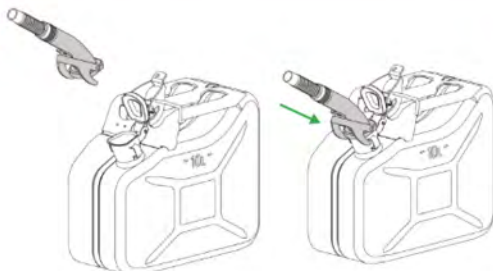
By pulling the lever, lift the lid up to open the neck opening.

5



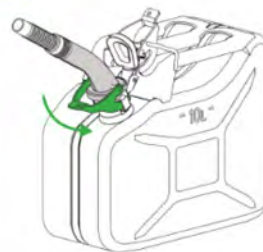
Lock the lid in place by lowering the lid hinge down.

6



By pulling the lever, lift the lid up to open the neck opening.

7



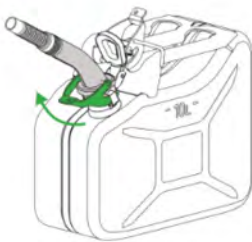
Move the arms of the lever into the cavities of the holder and push the lever of the spout down as far as it will go.

Wavian
Quality Fuel Cans & Accessories

IMPORTANT SAFETY INFORMATION

Removing a spout from a Wavian fuel can with bayonet fitting.

1



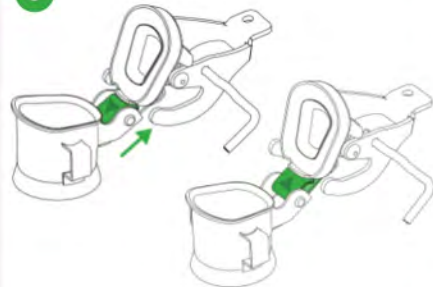
Push the lever forward until the lid completely covers the neck opening.

2



Remove the fuel spout.

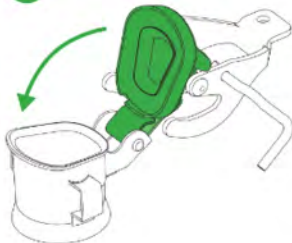
3



Important!

Before closing the fuel can lid, pull the lid with the hinge up by the lever.

4



Push the lever forward until the lid completely covers the neck opening.

If the lever doesn't move forward - see 3. The lever with the lid should move easily. Closing with too much force will damage the can.

5



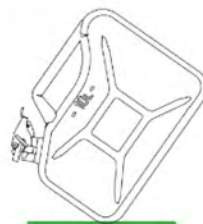
Close the lever by pressing the lever down as far as it will go.

6



Insert the locking pin through the lever and rotate it 90 degrees.

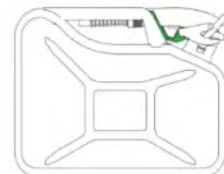
7



Caution!

Whenever tilted, make sure that the fuel can is airtight.

8



If the fuel can is equipped with a fuel spout holder, attach for easier transportation.

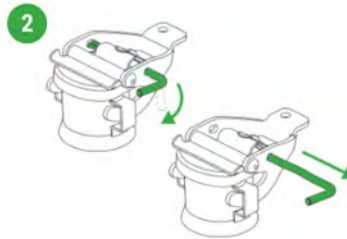
Wavian
Quality Fuel Cans & Accessories

IMPORTANT SAFETY INFORMATION

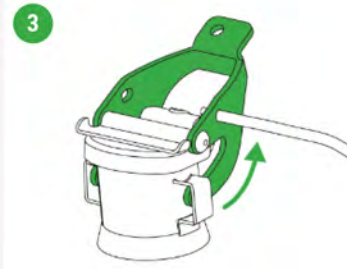
Connecting a 'Flexi Spout' to a Wavian Bayonet Fuel Can



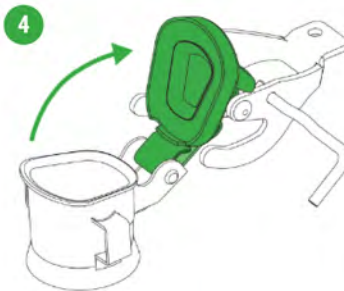
1 Place the fuel can on a flat, stable surface.



2 Turn the locking pin and pull it out of the lever as far as it will go.



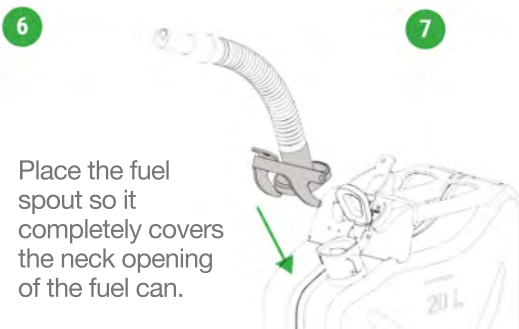
3 Lift the lever until the arms are fully released from the holder.



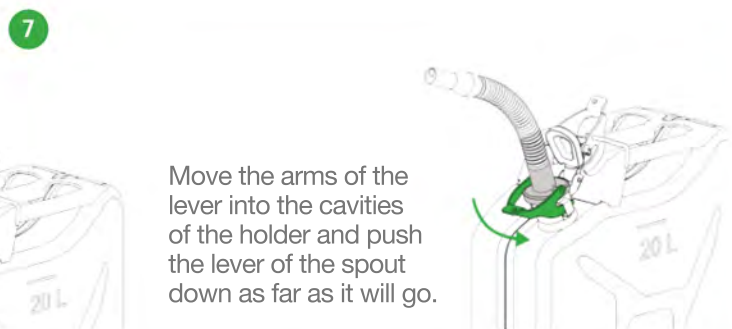
4 By pulling the lever, lift the lid up to open the neck opening.



5 Lock the lid in place by lowering the lid hinge down.



6 Place the fuel spout so it completely covers the neck opening of the fuel can.



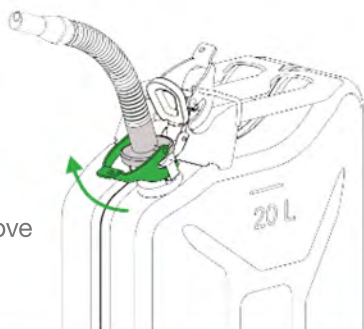
7 Move the arms of the lever into the cavities of the holder and push the lever of the spout down as far as it will go.

Wavian
Quality Fuel Cans & Accessories

Removing a Flexi Spout from a Wavian Bayonet Fuel Can

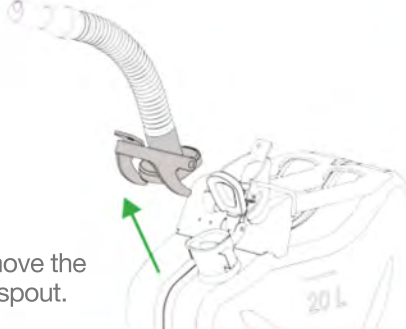
1

Pull back the lever of the fuel spout to remove the product from the fuel can.



2

Remove the fuel spout.



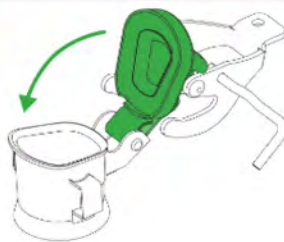
3



Important!

Before closing the fuel can lid, pull the lid with the hinge up by the lever.

4



Push the lever forward until the lid completely covers the neck opening.

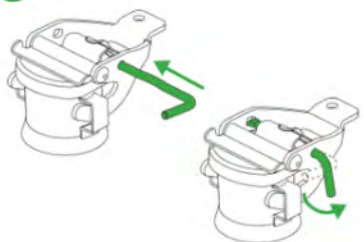
If the lever does not move forward - see step No.3. The lever with the lid should move easily. Closing with too much force will damage the fuel can.

5



Close the lever by pressing the lever down as far as it will go.

6



Insert the locking pin through the lever and rotate it 90 degrees.

7



Caution!

Whenever tilted, make sure that the fuel can is airtight.

8



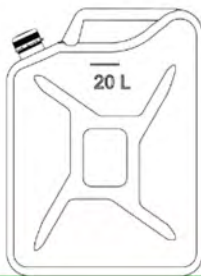
If the fuel can is equipped with a spout holder, attach the spout to the holder for easier transportation.

Wavian
Quality Fuel Cans & Accessories

IMPORTANT SAFETY INFORMATION

Connecting the 'Flexi Spout' to a Wavian Screw Top fuel can

1



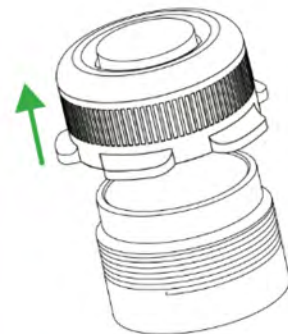
Place the fuel can on a flat stable surface.

2

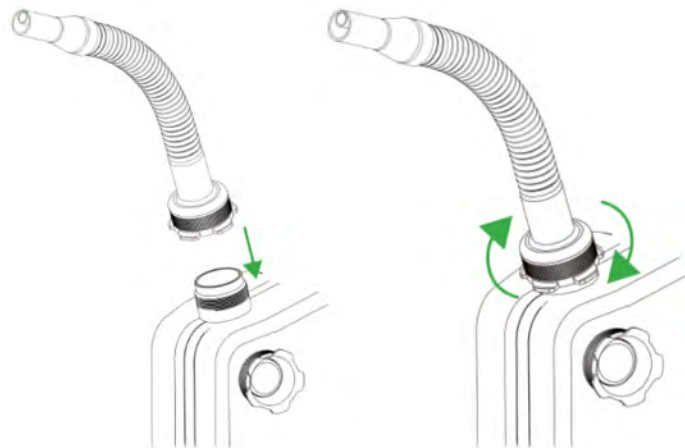


Open the fuel can by screwing the cap counterclockwise.

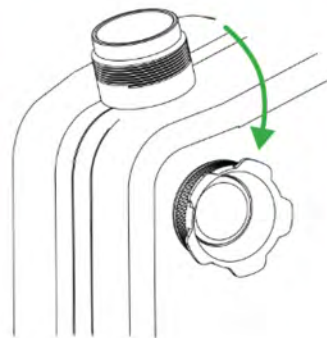
3



4



Screw the spout on by turning it clockwise until you feel resistance of the seal. Then turn the spout an additional 1/4 of a turn.



For your convenience, place the removed cap on the fuel can with the help of the incorporated magnet.

Wavian
Quality Fuel Cans & Accessories

IMPORTANT SAFETY INFORMATION

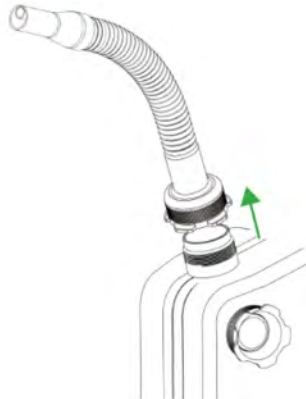
Removing the 'Flexi Spout' from a Wavian Screw Top fuel can

1



Unscrew the spout from the fuel can by turning it counterclockwise.

2



Remove the spout.

3



Place the cap back on the neck of the fuel can. Close the fuel can shut by screwing the cap clockwise.

4



Screw the cap until you feel resistance. Then turn the cap an additional 1/4 of a turn. Do not tighten too much as it may be difficult to unscrew.

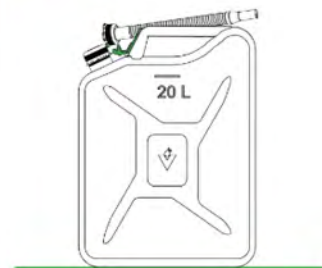
5



Caution!

Whenever tilted, make sure that the fuel can is airtight.

6



If the fuel can is equipped with a fuel spout holder, attach the spout to the holder for easier transportation.

Wavian
Quality Fuel Cans & Accessories

IMPORTANT SAFETY INFORMATION

Warnings & Recommendations on Wavian Fuel Cans

CAUTION!

Fuel can be UNDER PRESSURE and there may be a fuel SPILLAGE!

At heightened fuel temperatures (above 50 °C) in a closed fuel can, as well as at high altitudes (300+ metres above sea level), pressure in the fuel can may increase.

Rapid opening of the fuel can in such conditions could cause a fuel spillage.

Open the fuel can slowly and carefully.

Do not fill the fuel can more than its nominal capacity.

Do not store the fuel can in heat or in direct sunlight. Do not store the fuel can in wet places or in the rain.

Fuel and its vapours are highly flammable – do not smoke or use an open flame when using a fuel can.

Always follow the manufacturer's instructions when filling units, engines, etc.

Do not fill hot and/or running units!

Keep the fuel can out of the reach of children and in a well-ventilated area.

RECOMMENDATIONS

The fuel cans are painted with a special powder paint with high chemical resistance.

CAUTION! If the fuel can is stored outdoors, the paint (coating) may lose some of its original appearance (it can fade) within 3-9 months.

Even if the coating loses part of its original appearance, its ability to protect the metal will continue if the paint remains intact (if it is not mechanically damaged).

The fuel may contain foreign matter and debris. Always use filter strainers when refuelling.

Wavian Bayonet Spout and Flexi Spout Fuel Spouts have built-in filter strainers that intercept foreign matter and debris.

We recommend only using fuel spouts by Wavian.



Wavian
Quality Fuel Cans & Accessories

Warnings & Recommendations on Wavian 'Smart Spouts'

CAUTION!

Fuel can be UNDER PRESSURE and there may be a fuel SPILLAGE!

At heightened fuel temperatures (above 50 °C) in a closed fuel can, as well as at high altitudes (300+ metres above sea level), pressure in the fuel can may increase.

Rapid opening of the fuel can in such conditions could cause a fuel spillage.

Open the fuel can slowly and carefully.

Do not fill the fuel can more than its nominal capacity.

Do not store the fuel can in heat or in direct sunlight.

Do not store the fuel can in wet places or in the rain.

Fuel and its vapours are highly flammable – do not smoke or use an open flame when using a fuel can.

Always follow the manufacturer's instructions when filling units, engines, etc.

Do not fill hot and/or running units!

Keep the fuel can out of the reach of children and in a well-ventilated area.

RECOMMENDATIONS

The spout is only compatible with 5 and 10 litre fuel cans manufactured by Wavian.

Wavian is not responsible for the compatibility of the product with metal fuel cans made by other manufacturers. The Wavian Smart Spout fuel spout cannot be installed on Wavian 20 L fuel cans, as the weight of a full fuel can is too large for the spout to support it.

Make sure that the seal is not damaged (cracked, torn). Replace it if damaged.

The Wavian Smart Spout fuel spout is equipped with an automatic filling stop function – the filling is stopped when the fuel reaches the fuel spout tip or by lifting the spout from the neck of the tank that is being filled.

Before filling the fuel and removing the fuel spout, press the tip of the spout to even out the fuel vapour pressure in the fuel can.

After using the spout, remove the spout from the fuel can and close the lid of the fuel can.

Make sure that the fuel can is hermetically sealed. Remember that after use, the inside of the spout and the seal is coated with fuel.

When transporting the fuel can, the spout has to be removed from the neck of the fuel can, as it does not ensure that the fuel can is airtight.

Wavian
Quality Fuel Cans & Accessories

IMPORTANT SAFETY INFORMATION

Warnings & Recommendations on Wavian Flexi & Universal Spouts

CAUTION!

Fuel can be UNDER PRESSURE and there may be a fuel SPILLAGE!

At heightened fuel temperatures (above 50 °C) in a closed fuel can, as well as at high altitudes (300+ metres above sea level), pressure in the fuel can may increase.

Rapid opening of the fuel can in such conditions could cause a fuel spillage.

Open the fuel can slowly and carefully.

Do not fill the fuel can more than its nominal capacity.

Do not store the fuel can in heat or in direct sunlight. Do not store the fuel can in wet places or in the rain.

Fuel and its vapours are highly flammable – do not smoke or use an open flame when using a fuel can.

Always follow the manufacturer's instructions when filling units, engines, etc.

Do not fill hot and/or running units!

Keep the fuel can out of the reach of children and in a well-ventilated area.

RECOMMENDATIONS

The spout is only compatible with 5, 10 and 20 litre fuel cans manufactured by Wavian.

Wavian is not responsible for the compatibility of the product with metal fuel cans made by other manufacturers.

This spout is specially equipped with an air duct that provides air supply to the fuel can when fuelling.

This eliminates the vacuum in the fuel can and ensures the quick and easy discharge of fuel.

Caution!!! When starting or stopping the discharge of fuel, a small amount of fuel may leak from the air supply hole!

Make sure that the seal is not damaged (cracked, torn).

Replace it if damaged.

The flow of fuel does not stop automatically when using Wavian Flexi Spout and Universal Spout.

When fuelling, you should monitor the level of fuel and stop the process in good time.

After using the spout, remove the spout from the fuel can and close the lid of the fuel can.

Make sure that the fuel can is hermetically sealed.

Remember that after use, the inside of the spout and the seal is coated with fuel.

When transporting the fuel can, the spout should be removed from the neck of the fuel can, as it does not ensure that the fuel can is airtight.



Wavian
Quality Fuel Cans & Accessories

The background of the entire page is a collage of various technical drawings, blueprints, and maps. These include architectural plans with lines and dimensions, a map with a compass rose and geographical features, and a technical drawing of a mechanical part. The drawings are in black and white, with some areas highlighted in a light gray. The overall aesthetic is technical and precise.

Wavian

Quality Fuel Cans & Accessories

FOR MORE INFO VISIT WWW.WAVIAN.NET
+44 1508 493 647 sales@wavian.net

Wavian

Quality Fuel Cans & Accessories



Guidance On The Safe Use Of Wavian Fuel Cans & Spouts

FOR MORE INFO VISIT WWW.WAVIAN.NET
+44 1508 493 647 sales@wavian.net

Index

Bayonet Fuel Cans

Opening a Wavian Bayonet Fuel Can..... Page 3

Closing a Wavian Bayonet Fuel Can.....Page 4

Screw Top Fuel Cans

Opening a Wavian fuel can with a Screw Top.....Page 5

Closing a Wavian fuel can with a Screw Top Page 6

Smart Spout

Connecting a Smart Spout to a Wavian Bayonet Fuel Can Page 7

Removing a Smart Spout' from a Wavian Bayonet Fuel Can..... Page 8

Connecting a Smart Spout to a Screw To Fuel Can..... Page 9

Removing a Smart Spout from a Screw Top Fuel Can..... Page 10

Bayonet Spout

Connecting a Bayonet Spout to a Wavian Bayonet Fuel Can..... Page 11

Removing a Bayonet Spout from a Wavian Bayonet Fuel Can..... Page 12

Flexi Spout

Connecting a Flexi Spout to a Wavian Bayonet Fuel Can..... Page 13

Removing a Flexi Spout from a Wavian Bayonet Fuel Can..... Page 14

Connecting a Flexi Spout to a Wavian Fuel Can with Screw Cap..... Page 15

Removing a Flexi Spout from a Wavian Fuel Can with Screw Cap..... Page 16

Warnings & Recommendations

Warnings and recommendations on Fuel Cans..... Page 17

Warnings and recommendations on Smart Spout.....Page 18

Warnings and recommendations on Flexi and Universal Fuel Spouts..... Page 19

Wavian
Quality Fuel Cans & Accessories

IMPORTANT SAFETY INFORMATION

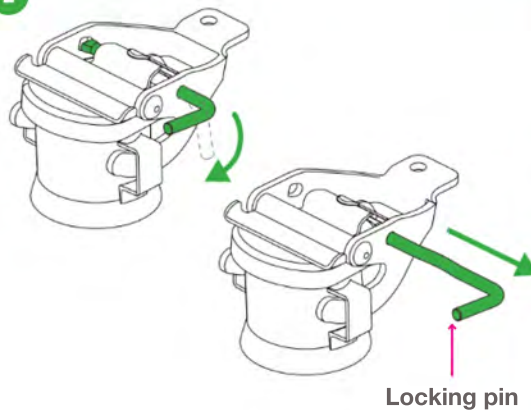
Opening a Wavian Bayonet Fuel Can

1



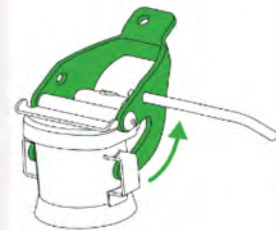
Place the fuel can on a flat, stable surface.

2



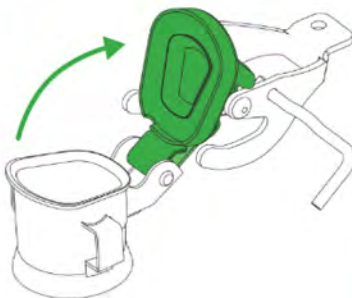
Turn the locking pin and pull it out of the lever as far as it will go.

3



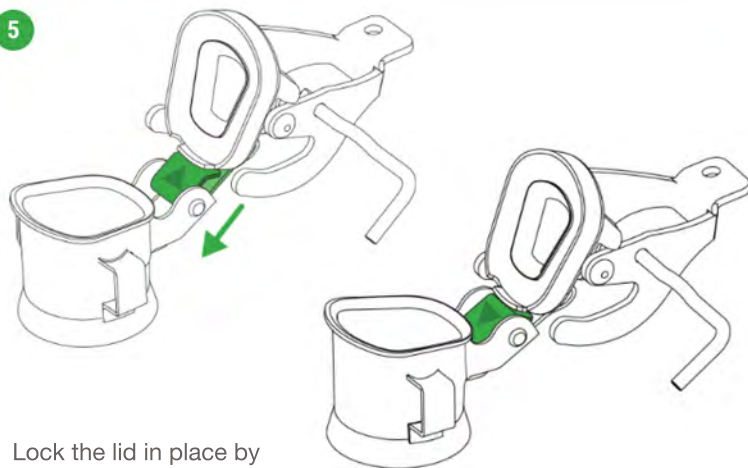
Lift the lever until the arms are fully released from the holder.

4



By pulling the lever, lift the lid up to open the neck opening.

5



Lock the lid in place by lowering the lid hinge down.

Wavian
Quality Fuel Cans & Accessories

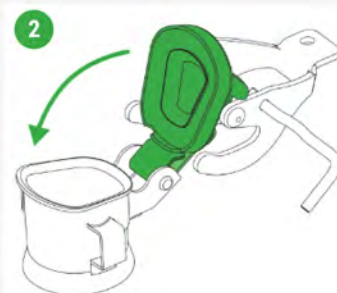
IMPORTANT SAFETY INFORMATION

Closing a Wavian Bayonet Fuel Can



Important!

Before closing the fuel can, pull the lid with the hinge up by the lever.

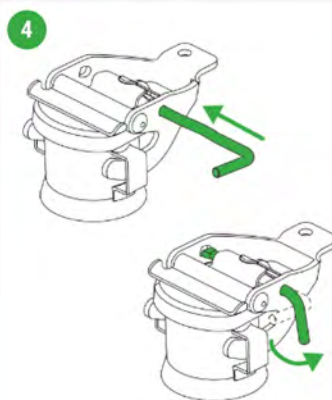


Push the lever forward until the lid completely covers the neck opening.

If the lever does not move forward - see step No.1. The lever with the lid should move easily and closing with too much force will damage the fuel can.



Close the lever by pressing the lever down as far as it will go.



Insert the locking pin through the lever and rotate in 90degrees.



Caution!

Whenever tilted, make sure the the fuel can is airtight.

Wavian
Quality Fuel Cans & Accessories

IMPORTANT SAFETY INFORMATION

Opening a Screw Top Fuel Can

1



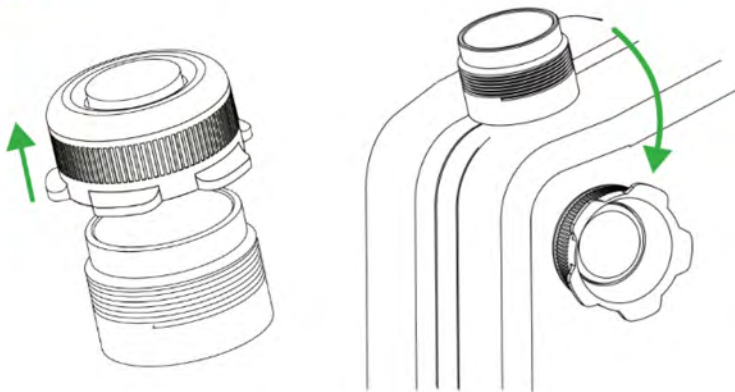
Place the fuel can on a flat, stable surface.

2



Open the fuel can by screwing the cap counterclockwise.

3



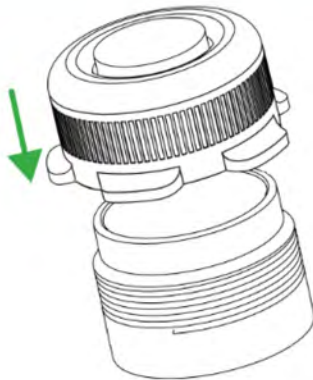
For your convenience, stick the removed cap to the fuel can with the help of the incorporated magnet.

Wavian
Quality Fuel Cans & Accessories

IMPORTANT SAFETY INFORMATION

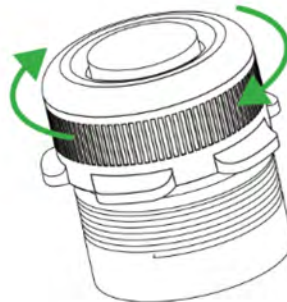
Closing a Screw Top Fuel Can

1



Place the cap back on the neck of the fuel can.

2



Close the fuel can shut by screwing the cap clockwise.

3



Screw the cap until you feel resistance. Then turn the cap an additional 1/4 of a turn. Do not tighten the cap too much, as it may be difficult to unscrew.

4



Caution!
Whenever tilted, make sure that the fuel can is airtight.

IMPORTANT SAFETY INFORMATION

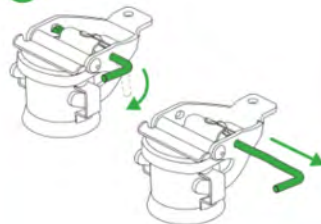
Connecting a Smart Spout to a Wavian Fuel Can

1



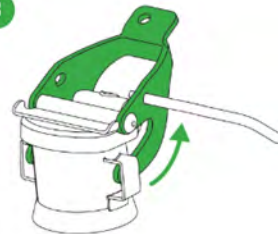
Place the fuel can on a flat, stable surface.

2



Turn the locking pin and pull it out of the level as far as it will go.

3



Lift the lever until the arms are fully released from the holder.

4



By pulling the lever, lift the lid up to open the neck opening.

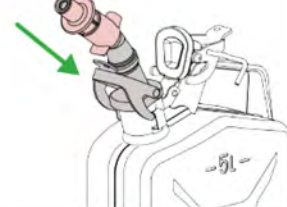
5



Lock the lid in place by lowering the hinge down.

6

Place the fuel spout so it completely covers the neck opening of the fuel can.



7



Move the arms of the lever into the cavities of the holder and push the lever of the spout down as far as it will go.

8



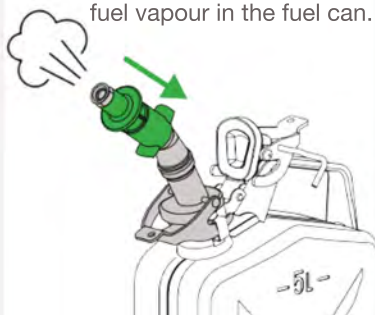
Before filling the fuel press the tip of the spout to even out the fuel pressure in the fuel can.

Wavian
Quality Fuel Cans & Accessories

IMPORTANT SAFETY INFORMATION

Removing a Smart Spout from a Wavian Fuel Can

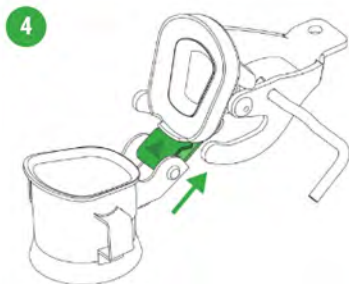
- 1** Press the tip of the spout to reduce the pressure of fuel vapour in the fuel can.



- 2** Pull back the level of the fuel spout to remove the product from the fuel can.



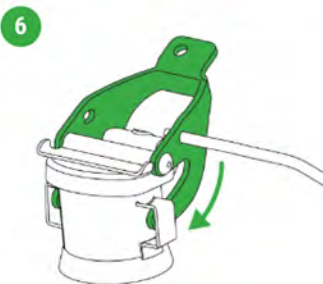
- 3**
-
- Remove the fuel spout.
- A line drawing of a fuel can with a spout. A green arrow points to the spout, which is being removed from the can.



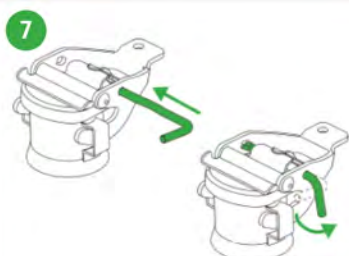
Important!
Before closing the fuel can lid, pull the lid with the hinge up by the lever!



Push the lever forward until the lid completely covers the neck opening.
If the lever does not move forward (see step 3). The lever with the lid should move easily. Closing with too much force will damage the can.



Close the lever by pressing the lever down as far as it will go.



Insert the locking pin through the lever and rotate it 90 degrees.



Caution!
Whenever tilted, make sure the fuel can is airtight.



If the fuel can is equipped with a fuel spout holder, attach the spout for easier transportation.

Please note: Because of the Smart Spout's unique design we recommend its use with our 5 & 10 Litre Wavian Fuel Cans.

Wavian
Quality Fuel Cans & Accessories

IMPORTANT SAFETY INFORMATION

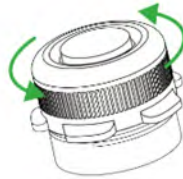
Connecting a Smart Spout to a Wavian screw top fuel can

1



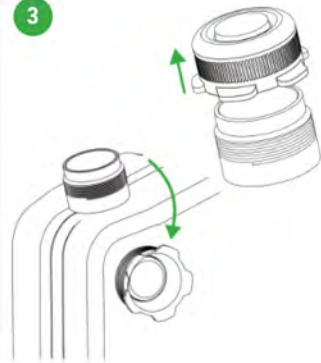
Place the fuel can on a flat, stable surface,

2



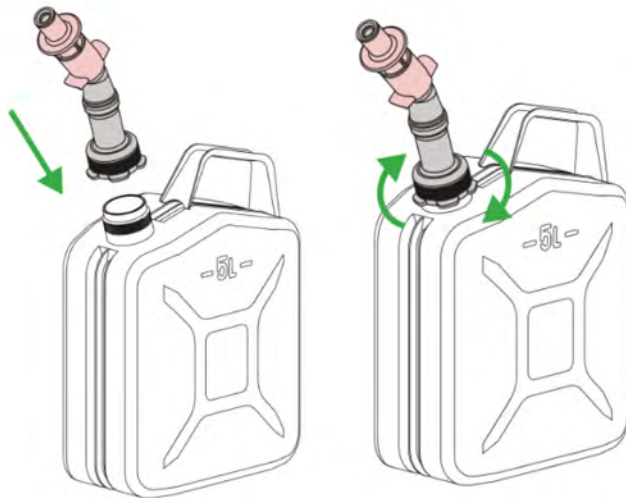
Open the can by screwing the cap counterclockwise.

3



Place the removed cap on the fuel can with the help of the incorporated magnet.

4



Screw the spout on by turning it clockwise until you feel resistance of the seal. Then turn the spout an additional $\frac{1}{4}$ of a turn.

5



Before filling the fuel, press the tip of the spout to even out the fuel vapour pressure in the fuel can.

Please note: Because of the Smart Spout's unique design we recommend its use with our 5 & 10 Litre Wavian Fuel Cans.

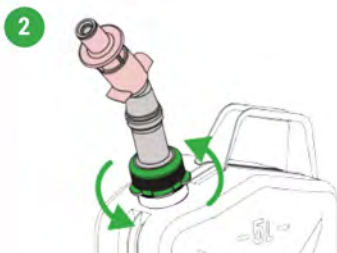
Wavian
Quality Fuel Cans & Accessories

IMPORTANT SAFETY INFORMATION

Removing a Smart Spout from a Wavian screw top fuel can



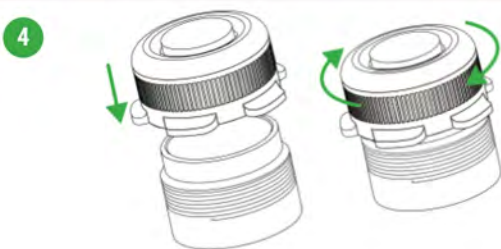
Press the tip of the spout to reduce the pressure of fuel vapour.



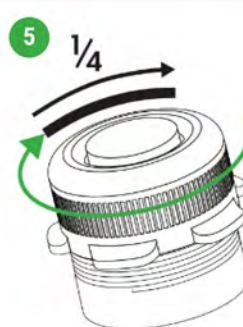
Unscrew the spout from the fuel can by turning it counterclockwise.



Remove the fuel spout



Place the cap back on the neck of the fuel can. Close the fuel can shut by screwing the cap clockwise.



Screw the cap until you feel resistance. Then turn the cap an additional $\frac{1}{4}$ of a turn.

Do not tighten the cap too much, as it may be difficult to unscrew.



Caution!
Whenever tilted, make sure that the fuel can is airtight.



If the fuel can is equipped with a fuel spout holder attach the spout for easier transportation.

Please note: Because of the Smart Spout's unique design we recommend its use with our 5 & 10 Litre Wavian Fuel Cans.

Wavian
Quality Fuel Cans & Accessories

IMPORTANT SAFETY INFORMATION

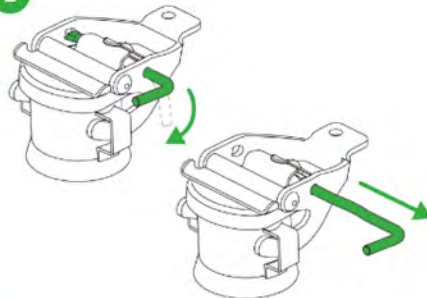
Connecting a spout to a Wavian fuel can with bayonet fitting.

1



Place the fuel can on a flat, stable surface.

2



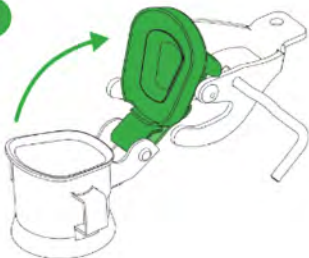
Turn the locking pin and pull it out of the lever as far as it will go.

3



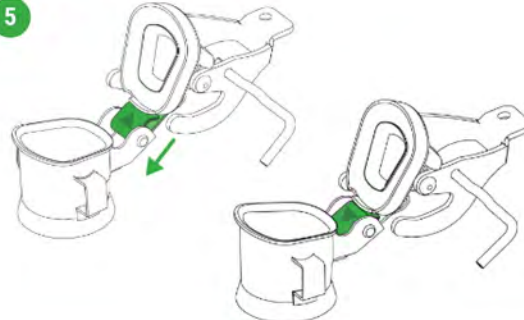
Lift the lever until the arms are fully released from the holder.

4



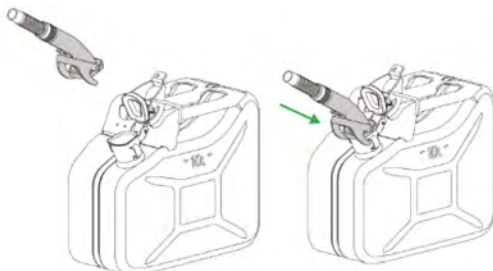
By pulling the lever, lift the lid up to open the neck opening.

5



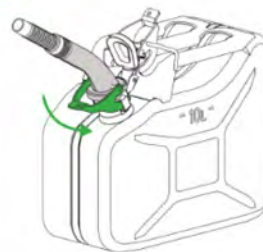
Lock the lid in place by lowering the lid hinge down.

6



By pulling the lever, lift the lid up to open the neck opening.

7



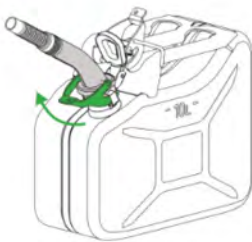
Move the arms of the lever into the cavities of the holder and push the lever of the spout down as far as it will go.

Wavian
Quality Fuel Cans & Accessories

IMPORTANT SAFETY INFORMATION

Removing a spout from a Wavian fuel can with bayonet fitting.

1



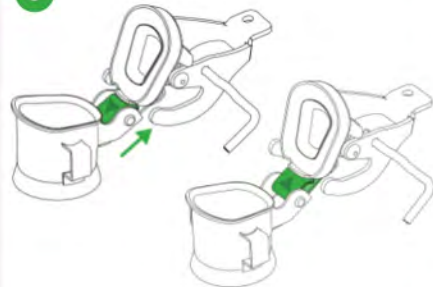
Push the lever forward until the lid completely covers the neck opening.

2



Remove the fuel spout.

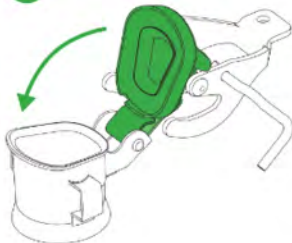
3



Important!

Before closing the fuel can lid, pull the lid with the hinge up by the lever.

4



Push the lever forward until the lid completely covers the neck opening.

If the lever doesn't move forward - see 3. The lever with the lid should move easily. Closing with too much force will damage the can.

5



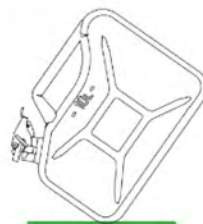
Close the lever by pressing the lever down as far as it will go.

6



Insert the locking pin through the lever and rotate it 90 degrees.

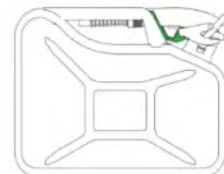
7



Caution!

Whenever tilted, make sure that the fuel can is airtight.

8



If the fuel can is equipped with a fuel spout holder, attach for easier transportation.

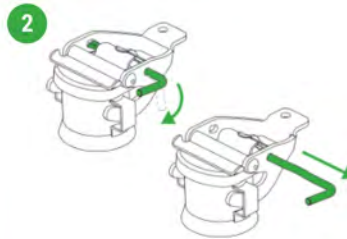
Wavian
Quality Fuel Cans & Accessories

IMPORTANT SAFETY INFORMATION

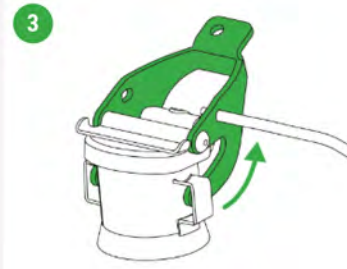
Connecting a 'Flexi Spout' to a Wavian Bayonet Fuel Can



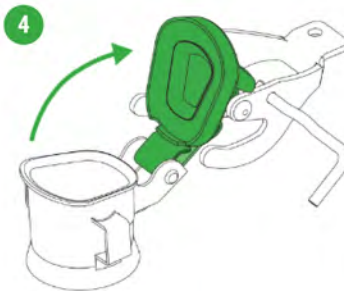
1 Place the fuel can on a flat, stable surface.



2 Turn the locking pin and pull it out of the lever as far as it will go.



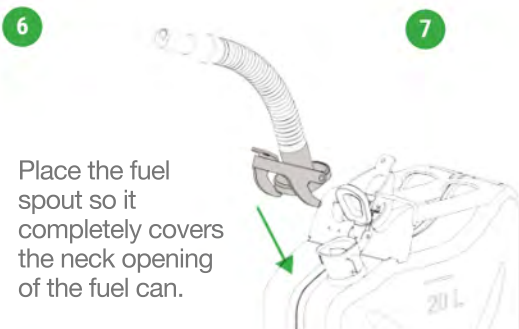
3 Lift the lever until the arms are fully released from the holder.



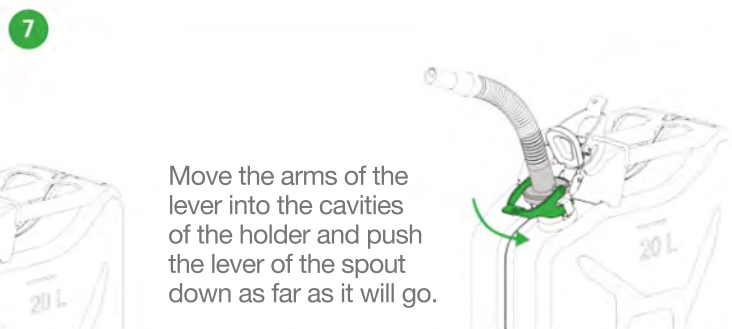
4 By pulling the lever, lift the lid up to open the neck opening.



5 Lock the lid in place by lowering the lid hinge down.



6 Place the fuel spout so it completely covers the neck opening of the fuel can.



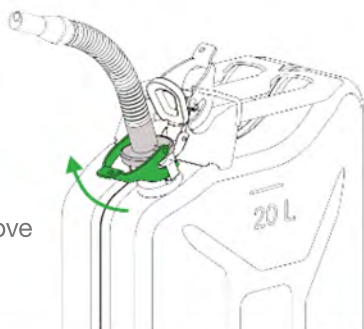
7 Move the arms of the lever into the cavities of the holder and push the lever of the spout down as far as it will go.

Wavian
Quality Fuel Cans & Accessories

Removing a Flexi Spout from a Wavian Bayonet Fuel Can

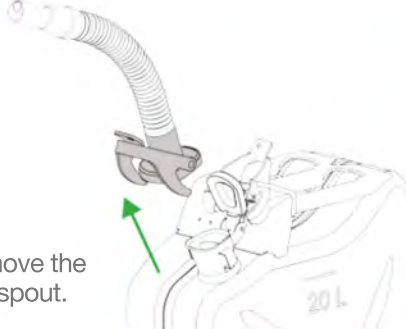
1

Pull back the lever of the fuel spout to remove the product from the fuel can.



2

Remove the fuel spout.

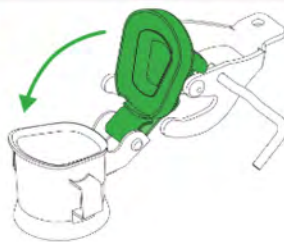


3



Important!
Before closing the fuel can lid, pull the lid with the hinge up by the lever.

4



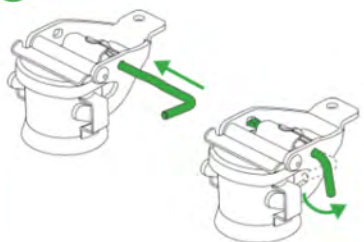
Push the lever forward until the lid completely covers the neck opening.
If the lever does not move forward - see step No.3. The lever with the lid should move easily. Closing with too much force will damage the fuel can.

5



Close the lever by pressing the lever down as far as it will go.

6



Insert the locking pin through the lever and rotate it 90 degrees.

7



Caution!
Whenever tilted, make sure that the fuel can is airtight.

8



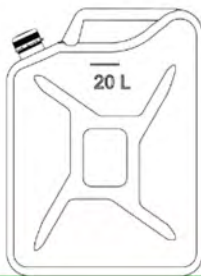
If the fuel can is equipped with a spout holder, attach the spout to the holder for easier transportation.

Wavian
Quality Fuel Cans & Accessories

IMPORTANT SAFETY INFORMATION

Connecting the 'Flexi Spout' to a Wavian Screw Top fuel can

1



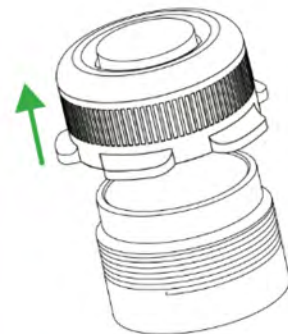
Place the fuel can on a flat stable surface.

2

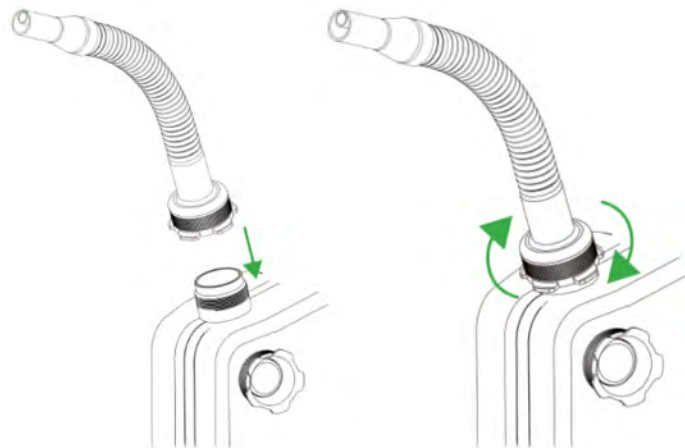


Open the fuel can by screwing the cap counterclockwise.

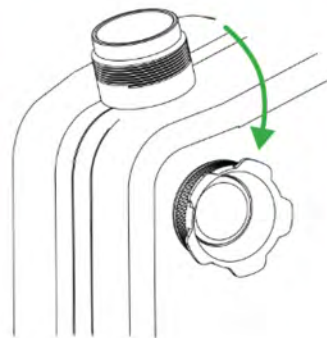
3



4



Screw the spout on by turning it clockwise until you feel resistance of the seal. Then turn the spout an additional 1/4 of a turn.



For your convenience, place the removed cap on the fuel can with the help of the incorporated magnet.

Wavian
Quality Fuel Cans & Accessories

IMPORTANT SAFETY INFORMATION

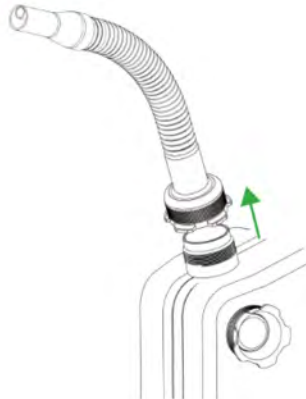
Removing the 'Flexi Spout' from a Wavian Screw Top fuel can

1



Unscrew the spout from the fuel can by turning it counterclockwise.

2



Remove the spout.

3



Place the cap back on the neck of the fuel can. Close the fuel can shut by screwing the cap clockwise.

4



Screw the cap until you feel resistance. Then turn the cap an additional 1/4 of a turn. Do not tighten too much as it may be difficult to unscrew.

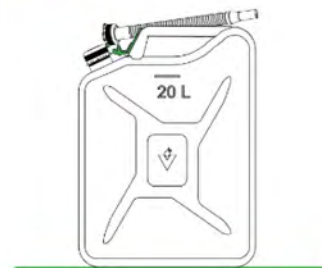
5



Caution!

Whenever tilted, make sure that the fuel can is airtight.

6



If the fuel can is equipped with a fuel spout holder, attach the spout to the holder for easier transportation.

Wavian
Quality Fuel Cans & Accessories

IMPORTANT SAFETY INFORMATION

Warnings & Recommendations on Wavian Fuel Cans

CAUTION!

Fuel can be UNDER PRESSURE and there may be a fuel SPILLAGE!

At heightened fuel temperatures (above 50 °C) in a closed fuel can, as well as at high altitudes (300+ metres above sea level), pressure in the fuel can may increase.

Rapid opening of the fuel can in such conditions could cause a fuel spillage.

Open the fuel can slowly and carefully.

Do not fill the fuel can more than its nominal capacity.

Do not store the fuel can in heat or in direct sunlight. Do not store the fuel can in wet places or in the rain.

Fuel and its vapours are highly flammable – do not smoke or use an open flame when using a fuel can.

Always follow the manufacturer's instructions when filling units, engines, etc.

Do not fill hot and/or running units!

Keep the fuel can out of the reach of children and in a well-ventilated area.

RECOMMENDATIONS

The fuel cans are painted with a special powder paint with high chemical resistance.

CAUTION! If the fuel can is stored outdoors, the paint (coating) may lose some of its original appearance (it can fade) within 3-9 months.

Even if the coating loses part of its original appearance, its ability to protect the metal will continue if the paint remains intact (if it is not mechanically damaged).

The fuel may contain foreign matter and debris. Always use filter strainers when refuelling.

Wavian Bayonet Spout and Flexi Spout Fuel Spouts have built-in filter strainers that intercept foreign matter and debris.

We recommend only using fuel spouts by Wavian.



Wavian
Quality Fuel Cans & Accessories

Warnings & Recommendations on Wavian Fuel Spouts

CAUTION!

Fuel can be UNDER PRESSURE and there may be a fuel SPILLAGE!

At heightened fuel temperatures (above 50 °C) in a closed fuel can, as well as at high altitudes (300+ metres above sea level), pressure in the fuel can may increase.

Rapid opening of the fuel can in such conditions could cause a fuel spillage.

Open the fuel can slowly and carefully.

Do not fill the fuel can more than its nominal capacity.

Do not store the fuel can in heat or in direct sunlight.

Do not store the fuel can in wet places or in the rain.

Fuel and its vapours are highly flammable – do not smoke or use an open flame when using a fuel can.

Always follow the manufacturer's instructions when filling units, engines, etc.

Do not fill hot and/or running units!

Keep the fuel can out of the reach of children and in a well-ventilated area.

RECOMMENDATIONS

The spout is only compatible with 5 and 10 litre fuel cans manufactured by Wavian.

Wavian is not responsible for the compatibility of the product with metal fuel cans made by other manufacturers. The Wavian Smart Spout fuel spout cannot be installed on Wavian 20 L fuel cans, as the weight of a full fuel can is too large for the spout to support it.

Make sure that the seal is not damaged (cracked, torn). Replace it if damaged.

The Wavian Smart Spout fuel spout is equipped with an automatic filling stop function – the filling is stopped when the fuel reaches the fuel spout tip or by lifting the spout from the neck of the tank that is being filled.

Before filling the fuel and removing the fuel spout, press the tip of the spout to even out the fuel vapour pressure in the fuel can.

After using the spout, remove the spout from the fuel can and close the lid of the fuel can.

Make sure that the fuel can is hermetically sealed. Remember that after use, the inside of the spout and the seal is coated with fuel.

When transporting the fuel can, the spout has to be removed from the neck of the fuel can, as it does not ensure that the fuel can is airtight.



Wavian
Quality Fuel Cans & Accessories

IMPORTANT SAFETY INFORMATION

Warnings & Recommendations on Wavian Flexi & Universal Spouts

CAUTION!

Fuel can be UNDER PRESSURE and there may be a fuel SPILLAGE!

At heightened fuel temperatures (above 50 °C) in a closed fuel can, as well as at high altitudes (300+ metres above sea level), pressure in the fuel can may increase.

Rapid opening of the fuel can in such conditions could cause a fuel spillage.

Open the fuel can slowly and carefully.

Do not fill the fuel can more than its nominal capacity.

Do not store the fuel can in heat or in direct sunlight. Do not store the fuel can in wet places or in the rain.

Fuel and its vapours are highly flammable – do not smoke or use an open flame when using a fuel can.

Always follow the manufacturer's instructions when filling units, engines, etc.

Do not fill hot and/or running units!

Keep the fuel can out of the reach of children and in a well-ventilated area.

RECOMMENDATIONS

The spout is only compatible with 5, 10 and 20 litre fuel cans manufactured by Wavian.

Wavian is not responsible for the compatibility of the product with metal fuel cans made by other manufacturers.

This spout is specially equipped with an air duct that provides air supply to the fuel can when fuelling.

This eliminates the vacuum in the fuel can and ensures the quick and easy discharge of fuel.

Caution!!! When starting or stopping the discharge of fuel, a small amount of fuel may leak from the air supply hole!

Make sure that the seal is not damaged (cracked, torn).

Replace it if damaged.

The flow of fuel does not stop automatically when using Wavian Flexi Spout and Universal Spout.

When fuelling, you should monitor the level of fuel and stop the process in good time.

After using the spout, remove the spout from the fuel can and close the lid of the fuel can.

Make sure that the fuel can is hermetically sealed.

Remember that after use, the inside of the spout and the seal is coated with fuel.

When transporting the fuel can, the spout should be removed from the neck of the fuel can, as it does not ensure that the fuel can is airtight.



Wavian
Quality Fuel Cans & Accessories

The background of the page is a light gray map. Overlaid on the map are several technical drawings and a ruler. In the top right corner, there is a technical drawing of a fuel tank with dimensions: 40x40x50, 40x40x50, 40x40x50, and 40x40x50. In the bottom left corner, there is a ruler with markings for 20, 40, 50, and 100. In the bottom right corner, there is a ruler with markings for 20, 40, 50, 60, 70, 80, 90, and 100.

Wavian

Quality Fuel Cans & Accessories

FOR MORE INFO VISIT WWW.WAVIAN.NET
+44 1508 493 647 sales@wavian.net